



Atkins Building Newsletter

The Atkins Building • Lower Bond Street • Hinckley • Leicestershire LE10 1QU

Spring/Summer 2016



Hinckley & Bosworth
Borough Council

A Borough to be proud of



Atkins Building comes alive with The Sound of JAM!

In February JAM opened a brand new rock school at the Atkins Building. This follows the popular learning and performance style of their Market Bosworth Saturday Sessions. These sessions at the Atkins Building are open on Tuesday evenings between 6pm and 7.30pm for 8 to 16 year olds and JAM have now added an adults session between 7.30pm and 8pm. FREE tasters are available which must be booked please on **07786 605111, 01455 841696** or jam.music@live.co.uk

Reception Revamp

Local artist Ross Kilgour has deployed his creative talent and sign writing skills to put the Atkins brand onto the front and side of the reception desk. Ross has carefully painted the art deco style logo onto the Atkins Reception to complement the grade II listed building. Not only does this clearly point visitors in the right direction but it adds a certain creative flourish to the Atkins Building's reception area whilst supporting a declining skill.



Wide Horizons

The Atkins Team welcomes new tenant **James Rawlings** and his company **Wide Horizons** to the building. Wide Horizons carries out aerial surveying, auditing and inspection services as well as photography and video capabilities using multirotor platforms and unmanned air vehicles (UAV's) specialising in both the commercial and industrial sector. Wide Horizons has the capabilities to provide detailed visual inspections and surveys of tall or awkward structures, unparalleled aerial imagery and 4K video footage for promotional work, event coverage, building surveys and construction progress imagery. Having all necessary insurance for aerial work, all operatives hold full CAA permission for aerial work and using state of the art technology they provide an alternative service for inspecting hard to reach areas such as commercial roof areas and historic buildings. Wide Horizons also offer aerial photography and video services for real estate purposes or event photography.



James Rawlings explains

"We provide a unique service which solves a huge access and safety issue within the construction industry and further afield. We are internationally recognised after gaining ISO 9001:2008 Certification and for being one of the first UK UAV operating companies to do so. The Atkins Building has provided our business with a fantastic platform to grow and develop our client base and company size. The ability to use multiple meeting rooms allows us to create an environment which is allowing us to compete with much larger companies. The huge selection of differing industries within the Atkins building will also assist us in engaging with new markets and industries."



Upcoming events and exhibitions see inside...

Upcoming events and exhibitions at Atkins Building:



Coventry University Drawing Prize 2016

19 - 30 April

Back for the second year running, the Coventry University Drawing Prize is set to grace the Atkins Gallery with a tremendous selection of artwork. Following its success last year, the competition, which is in its seventh year, will be open to the public from the 19 April. There will be a variety of drawings and styles exhibited; the aim of the project is to celebrate the possibilities of this challenging activity whilst promoting ability and artistic talents. The exhibition's Evening View is scheduled to take place on 21 April.



North Warwickshire and Hinckley College H.E. Photography

7 - 28 May



The graduate photography show of NWHC students who have completed Higher National Diploma and Honours Degrees in Photography. This varied mix of student work ranging from portraiture to installations is the first photographic exhibition of 2016 and will be well worth a visit. There will be an Evening View to launch the exhibition on the 11 May.



Whitefriars Revisited

4 - 26 June

A huge collection of historic Whitefriars Glass from 1935 to 1969 will be on display in Atkins Gallery from local business Haybarn Glass of Castle Street exploring the designs, themes and choice of colours from this renowned glass manufacturer.

Exhibition Events:

- Lockdales will be in the building on the 9th June giving visitors an opportunity to get their antiques valued and sold at auction.
- Also on the 7 June, Andy McConnell from the Antiques Roadshow makes an appearance as guest speaker talking about Haybarn Glass alongside Whitefriars exhibitor Chris Woolman from 6pm. To book tickets, follow this link: <http://www.whitefriarsrevisited.com/Guest-Speaker-Tickets.php#!/Andy-McConnell-Beyond-the-Glass-7-06-2016-18-00pm/p/64793048/category=18918004>



'Local Landscapes' Open Exhibition

15 July - 13 August

Following its successful debut last summer the Open Exhibition returns with this year's theme 'Local Landscapes.' Artists are encouraged to interpret the theme in their own way, using their choice of mediums to convey local landscapes. For more information or to obtain a booking form including terms and conditions please visit the Atkins Building website or email info@atkinsbuilding.co.uk

Café Español

Licensed Tapas Bar and Café

Café Español celebrated its first birthday in February and in just over a year this wonderful contemporary Spanish Licensed Tapas Bar and Café has gone from strength to strength to gain tremendous popularity. Offering a range of Spanish homemade Tapas, Spanish wines, Sangria and beers, Julian and Silvia pull out all the stops to create an authentic experiencia Español and also provide a selection of sandwiches, baguettes, salads, and homemade cakes and tarts.

Open every weekday Monday to Friday 8am - 2.30pm and Saturday 10am - 2.30pm, Café Español has a fantastic array of breakfast and lunch dishes as well as tasty snacks. Opening times extend into the evenings on Thursdays, Fridays and Saturdays when the Café is open 6.30 - 10:30pm with a superb evening menu and giving visitors the opportunity to look around the Atkins Gallery. It is recommended that potential diners ring to book a table for the evening to ensure there is availability and to also check that the Café is not engaged in another activity or event. You can hire the Café for your own event as Café Español is able to cater for wedding receptions, birthdays, special occasions and business events so please contact Julian and Silvia to make your booking.

Café Español hosts a variety of events, including the increasingly popular Jazz Nights, which take place every second Thursday of the month. The musicians performing at Jazz Night vary, to keep the music refreshing and doors open at 7pm with live music on from 8pm - 10.30pm. Hot and cold drinks, as well as tapas and other delicious Spanish inspired meals and snacks are available throughout Jazz Night, for which entry costs £5.

Other events held in Café Español include Spanish Nights where only Spanish is spoken, Soul Nights and Flamenco Nights to get your pulses racing! For further information please email info@cafeespanol.co.uk visit www.cafeespanol.co.uk or check out Facebook and Twitter and to book a table please call **07462 390122**.

Café Español is a disability friendly venue and car parks surrounding the Atkins Building are free after 5.30pm each evening.



The Café and Gallery opening hours are:

Daytime

Monday to Friday 8am - 2.30pm

Saturday 10am - 2.30pm

Evenings

Thursday to Saturday 6.30pm - 10pm

Sunday Closed



Ladies That Do II

informal, monthly lunch networking in Hinckley, Leicestershire

OFFICIAL LAUNCH – Friday 29 April

Would you like to network with 'like minded' women in business from Hinckley and surrounding areas? Lesley Bee formed the original **Ladies That Do** group in 2012, to offer women in business a networking environment with an emphasis on building connections, making friends and exchanging business in an informal, relaxed atmosphere. Our lunch meetings take place on a monthly basis at Hinckley Golf Club. Now in its 4th year, this group continues to thrive and has a waiting list of businesses wishing to join. Due to demand **Ladies That Do II** will launch April 2016.

Hinckley Golf Club Friday 29 April • 12 noon

Subsequent meetings will take place on the last Friday of every month. Allow around 2 hours for meetings.

Membership (equates to just £26 per month including lunch)

- **£95.00** per year membership fee.
- **£18 monthly fee** to be paid by standing order on the 1st of each month. This fee includes a welcome glass of wine or soft drink and a main course lunch.

EARLY BIRD OFFER:

Save £10 on your yearly membership. If you wish to join up following the first networking meeting on Friday 29 April, you can take advantage of the Early Bird Offer of yearly membership for £85. To take advantage of this offer you must pay the £85 fee at the end of the launch meeting.

Lesley Bee | 01455 233224

£95 membership includes:

- Professional head shot with Lesley Bee including a mini photography session and 2x digital images for your business use (usual price £60).
- Web link and information about your business on the Ladies That Do website (launch date tbc).
- Exclusivity for your business.
- 30 second intro slot at every meeting.
- Option to book a 10 minute spotlight slot to further promote your business.
- Private Facebook page to socialise with members of the group.
- Public Facebook page where you can also share your good news, special offers etc to the general public.
- 10% discount / alternative offer from businesses within the group.

interested?

To confirm you wish to attend our first launch meeting please call me on **01455 233224** to pay your **£18**. Please note this will be on a 'first come, first served' basis due to interest from duplicate businesses. I can accept credit or debit card payment over the telephone.



Who or What is in your Local Landscape?

Following on from the success of last year's debut **Open Exhibition**, the Atkins Gallery is again looking for artists to display their creative abilities this summer. The title '**Local Landscapes**' keeps the brief rather open and all-inclusive, encouraging artists to use their choice of mediums to convey recognisable landscapes. Who or what is in your local landscape? Idyllic countryside, people at the bus stop, historic or iconic buildings or the view from your bedroom window? The possibilities are endless and the theme can be interpreted in a variety of ways! An **Evening View** is scheduled to take place on **Friday 15 July** to launch the exhibition and gives the artists and visitors the chance to mingle and discuss the artwork.

Submissions interpreting the theme are to be submitted on the following dates: **4, 5 and 6 July at £12 for up to 3 pieces** (terms and conditions apply.)

For more information or to obtain a booking form including an Exhibitor Pack containing terms and conditions please visit the Atkins Building website or email info@atkinsbuilding.co.uk



Last year's Open Exhibition exhibits



Wedding Fair

Saturday 20 February 2016 • 10.00am - 4.00pm

Atkins Building • Lower Bond Street • Hinckley



Retrospective on the Wedding Fair

The Atkins Building held its 5th annual Wedding Fair on Saturday 20 February 2016. This year there was a change of venue with the event taking place in the Atkins Gallery and Café Español. Potential brides were out in force to peruse the variegated stalls of local wedding exhibitors to gather inspiration for their special day. Leicestershire Registration Service was on hand to answer questions and provided tours of the ceremony suites. It was an enjoyable day and hopefully some sensational weddings will result from the Wedding Fair too!

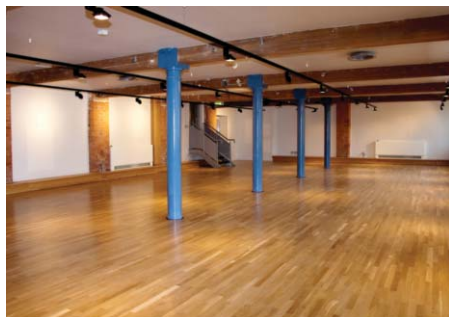
Prize Draw Winners Ethan and Hannah

Wedding Fair Prize Draw winners Hannah Mason and Ethan Hawkins did not suspect that a visit to the Atkins Building's annual Wedding Fair would turn out to be so advantageous for them. The building's 5th annual Wedding Fair held in the Atkins Gallery boasted a fine selection of local exhibitors, some of which had offered gifts to the free entry prize draw which all visitors were welcome to enter. The winner selected at random was Ethan Hawkins of Earl Shilton who plans to marry his fiancée Hannah Mason in August 2017. The couple admitted to being over-the-moon at the news they had won, stating that "When we entered we never even had the thought that we might win. It came as a complete surprise."

Included in the prizes were a Michelle Kemp Photography gift voucher for pre-wedding couple photo shoot including one mount print; £50 gift voucher from Sue Todd of Designer Travel; a hamper of best-selling Forever Living Products courtesy of local representative Jennifer Plester, Choices Floristry gift Voucher; £100 towards wedding décor when selected from the WOW Business; and a custom made vanilla sponge cake made specially by Ann Patchett of Ann's Party Catering. The prizes were presented to Hannah and Ethan in Café Español on Saturday 12 March 2016 and several exhibitors re-joined them for a cup of coffee to celebrate as photographs were taken. The Atkins based staff would like to congratulate Hannah Mason and Ethan Hawkins and wish them all the very best for a happy future together.



Strengthening and Toning Pilates Classes



Partridge Suite

Pilates is an ideal way to build strength from the inside out whilst toning your body, improving posture, increasing flexibility and relieving unwanted stress and tension. Body Control Pilates classes take place:

Atkins Building's Partridge Suite • Thursday evenings • 6.30pm to 9.30pm

and sessions are also available in the daytime at:

Hinckley Hub • Thursdays • from 12 noon

For more information please contact **Katey** on **07887 895022** or email **back2backpilates@gmail.com**

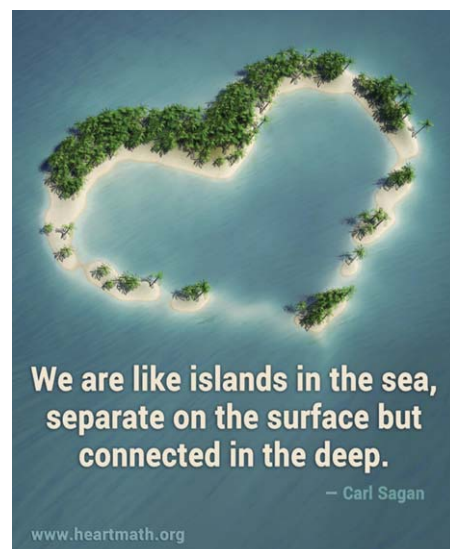
A Peaceful Place

Marina Broadley from **Heart of Well Being** is bringing a brand new relaxed **Monthly Mindfulness Meeting** to the Atkins Building. This is all about feeling good, being well and understanding how we create toxic minds and bodies, distress and unhappiness. This is where you need to be. Part of it. Connected. There is much compelling research about the incredible health benefits evoked from being part of a group like this. You can't get this kind of goodness stuck behind a computer screen. You need to be there!

If you're a complete Mindfulness and or Meditation beginner, then great. You can gain a tremendous amount by learning about your mind and how to quieten it, how to live more in the present, how to access calm states of mind, the value of letting go... and much more. Contact Marina Broadley and have a chat about it.

marinabroadley@outlook.com or **07342 652090**

More about this on her website:
<http://www.heartofwellbeing.co.uk/>



If you are interested in exhibiting in the Atkins Gallery or in any other aspect of the Atkins Building, please contact **01455 247070** or **info@atkinsbuilding.co.uk**

For updates of events and exhibitions taking place in the Atkins Gallery please visit: **www.atkinsbuilding.co.uk**



Hinckley & Bosworth
Borough Council

A Borough to be proud of



For more information:

tel: **01455 247070** email: **info@atkinsbuilding.co.uk**

twitter



Find us on facebook